

MONTHLY MEMBERSHIP PROGRESS REPORT

District 60 A

Results as of: 5/31/2020

GMT:

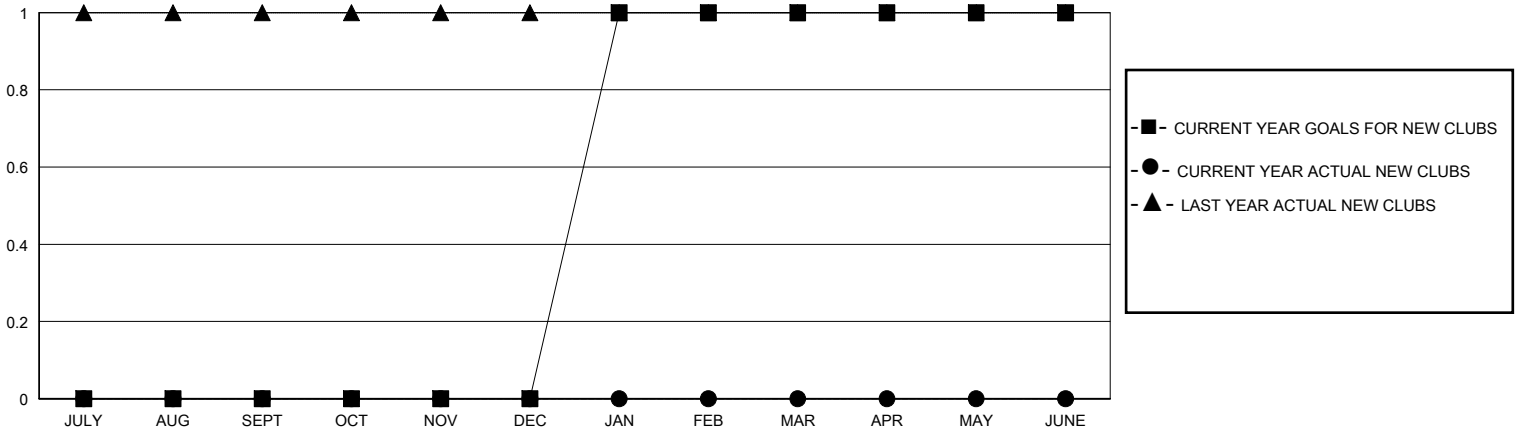
LOCATION GUYANA

GMT CA

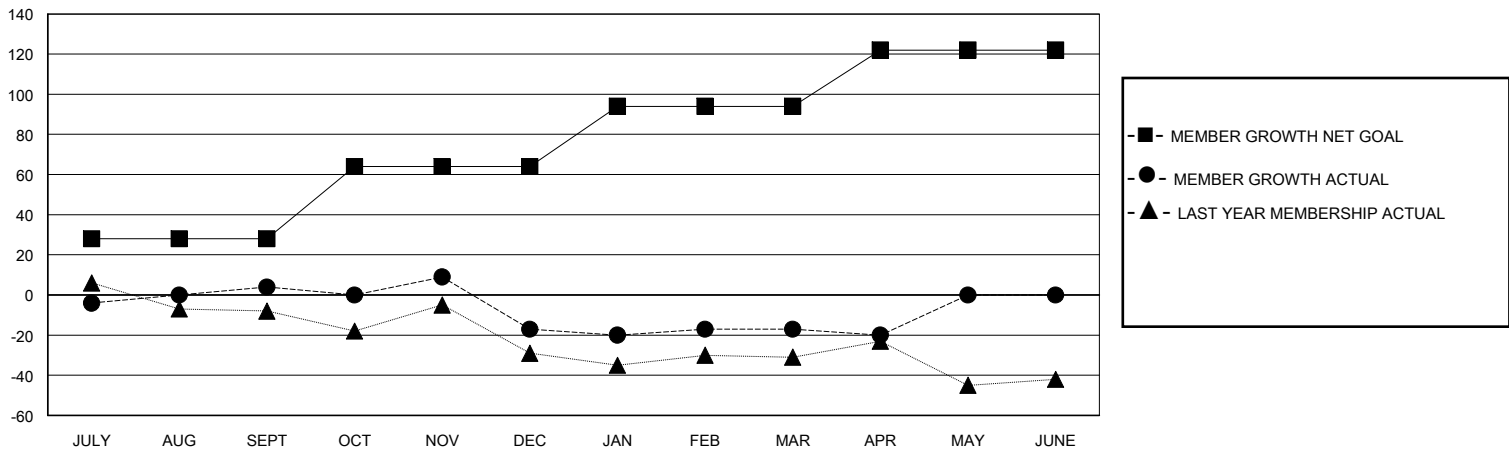
| Clubs | | | |
|-----------------------|---------------|-----------|---------------|
| RESULTS FOR 2019-2020 | | | |
| QUARTER | NEW CLUB GOAL | NEW CLUBS | DROPPED CLUBS |
| JULY/AUG/SEPT | 0 | 0 | 0 |
| OCT/NOV/DEC | 0 | 0 | 0 |
| JAN/FEB/MAR | 1 | 0 | 1 |
| APR/MAY/JUNE | 0 | 0 | 0 |

| Members | | | |
|-----------------------|------------------------|----------------------|--|
| RESULTS FOR 2019-2020 | | | |
| QUARTER | MEMBER GROWTH NET GOAL | MEMBER GROWTH ACTUAL | DROPPED MEMBERS ACTUAL (including transfers) |
| JULY/AUG/SEPT | 28 | 29 | 21 |
| OCT/NOV/DEC | 36 | 40 | 56 |
| JAN/FEB/MAR | 30 | 43 | 35 |
| APR/MAY/JUNE | 28 | 1 | 4 |

GOALS AND ACTUAL NEW CLUBS CUMULATIVE



GOALS AND ACTUAL MEMBERS CUMULATIVE



DROPPED CLUBS: 1

31 CLUBS OF 62 ADDED 1 OR MORE NEW MEMBERS

GENDER DISTRIBUTION

MALE 748 (46.34%)
FEMALE 866 (53.66%)

DROPPED MEMBERS

| | |
|----------------|------------|
| DECEASED | 10 |
| CLUB CANCELLED | 0 |
| OTHER | 106 |
| TOTAL | 116 |

[CLICK HERE FOR CUMULATIVE MEMBERSHIP DATA](#)

| | |
|---------------------------------|----|
| TOTAL FAMILY UNIT MEMBERS | 64 |
| FAMILY MEMBERS PAYING HALF DUES | 33 |